



Methodist Women
in Britain

Annual Review

2015—2016





Methodist Women in Britain is a charity within the Methodist Church of Great Britain.

Its aims are three-fold:

- to bring women together, encouraging one another to know Christ and to make him known, as Methodist women and as part of the wider Church in the world;
- to encourage, resource and train women members of the Methodist Church, equipping them to participate more fully in the wider church and in society;
- to connect women in Britain with women overseas, working in partnership with others to raise awareness of and act upon issues of social justice around the world.

It does this by:

- providing fellowship and training events, including residential conferences and one day events;
- producing resources and publications, both printed and online, for worship and spiritual growth, and for advocating and providing information on issues of social concern;
- highlighting areas of need and raising funds or providing other goods to support partners and agencies working to alleviate poverty and injustice.

Forum Members (Trustees)

at September 2016



Beds, Essex & Herts	Jenny Broadbridge
Birmingham	Carole Trigger
Bolton & Rochdale	Anne Cash
Bristol	Carolyn Buley
Channel Islands	<i>Vacancy</i>
Chester & Stoke	Chris Thompson
Cornwall	Anne Cresswell
Cumbria	Delphine Gratrix
Darlington	Celia Shires
East Anglia	Heather Sorrell
Isle of Man	Lesley Bridson
Lancashire	Linda McCall
Leeds	Doreen Whittaker
Lincolnshire	Rita Rowe
Liverpool	Janet Walton

London	Blossom Jackson
Manchester & Stockport	Angela Doyle
Newcastle upon Tyne	Judy Tasker
Northampton	Nina Rawlins
Nottingham & Derby	Sue Palmer
Plymouth & Exeter	Deborah Kirk
Scotland	Kate Curtis
Sheffield	Ann Taylor
Shetland	Sylvia White
South East	Carol Jewell
Southampton	Hilary Evans
Synod Cymru	Margaret Morgan
Wales Synod	Ronnie Dean
West Yorkshire	Glenys Vere
Wolverhampton & Shrewsbury	Joan Wickett
York & Hull	Elaine Turner
President	Anne Browse
Vice President	Sandra Goodwin
Finance Officer	Gillian Womersley
Communications Officer	Judith Simms
WFM&UWC Officer	Carolyn Lawrence
Helen Kim Memorial Scholar	Rachel Allison
Women's World Day of Prayer	Elizabeth Burroughs

Heritage and Archives Project

Transforming the World from the kitchen?

The exhibition at Epworth Old Rectory was open from March to October 2016. Pictured right is Dr Jill Barber, Vice President of the Methodist Conference, cutting the ribbon at the official launch. Exhibits highlighted the role of Susanna Wesley as the 'Mother of Methodism' and her influence on future generations of Methodist women.



This project, in partnership with Epworth Old Rectory, aims:

- to tell the story of women's movements in the Methodist Church, from Women's Work, formed in 1858, through Girls' League, Women's Fellowship, Young Wives, Women's Network, to the contemporary work of MWiB, and
- to collect together individual stories of Methodist women from Susanna Wesley to the present.



Sarah Braisdell, a young research graduate, joined the project's task group, and was instrumental in researching, collecting and cataloguing artefacts and stories, and curating the resulting heritage exhibition.

One section of the exhibition, on the theme of 'Reminiscence', particularly highlighted MWiB's focus on Dementia Friendly Church, which has resulted in the production of a resource pack in partnership with Methodist Homes for the Aged (available from MWiB resources, cost £5).

'Reminiscence' makes reference to photographs, pictures, objects or clothes from the past and the creating of 'memory boxes'.

The submission of artefacts and stories for this ongoing project is still welcomed. You can contact our researcher Sarah Braisdell via the MWiB admin email address (see back page), or by post at Epworth Old Rectory 1 Rectory St, Epworth North Lincs, DN9 1HX

Or you can share your stories online at <http://www.mymethodisthistory.org.uk/>

"Heritage is not about preserving the past.

It is about using the past to challenge the present, and help determine our direction of travel."

(Dr Jill Barber)

Finding our Voice: Heritage, Gender and Story

Swanwick Residential 2016

Our keynote speaker was Dr Jill Barber, Vice President of the Methodist Conference *[pictured right]*. Jill has been working with MWiB on our Heritage and Archives project, and this was reflected in her theme of *Gender, Heritage and Story* as she shared with us the stories of Methodist women past and present, and challenged us to share our own unique faith-stories as women, as Methodist people, and as followers of Christ.



MWiB holds an annual residential weekend at The Hayes Conference Centre in Swanwick, Derbyshire, with around 250 women meeting together for worship, fellowship, Bible study, and much more.

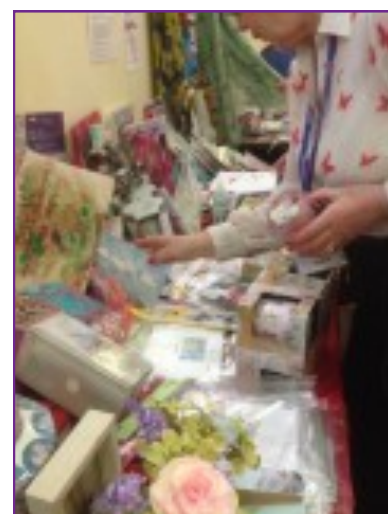


Throughout the weekend our theme was explored through keynote sessions and worship, and through a wide variety of workshop sessions, including: Signing in Worship, finding God in the 'unexpected' story, migration and human trafficking, the life of Sarah (Abraham's wife), making and using giant puppets for story-telling, MWiB's partnership with Epworth Old Rectory, and the chance to learn new arts and crafts.



Throughout the weekend there was the opportunity to shop for a variety of goods in the Marketplace, helping local groups raise money for projects at home and overseas. The Butterfly Bring & Buy stall *[right]* was very popular, raising over £1,000 for the 'Tenners for Texas' appeal, to enable Eastern European women to attend the World Assembly in Houston.

The Saturday night session was led by workshop participants, including singing led by members of the Zimbabwean congregation, signing in worship, and story-telling with larger-than-life-size puppets' *[left]*.



World Church Partnerships



CHURCH OF NORTH INDIA AND DALIT SOLIDARITY

At the Forum meeting in May 2011, Dalit Solidarity was adopted as one of MWiB's first social justice campaigns. A steep learning curve awaited us all in understanding caste discrimination which, while based in Hinduism, affects people of all faiths and none, with Dalit people discriminated against in every aspect of life in Indian communities around the world. The Task Group produced a resource pack of information, worship material, discussion starters, etc. in 2013.

MWiB President-Elect Linda Crossley visited the Church of North India (CNI) to learn more about the issue at first-hand. Many CNI members are Dalits, and Christians, and women and girls, are discriminated against to a disproportionate degree. Following this visit, MWiB entered into partnership with CNI, and events were held at local and Connexional level to raise funds and awareness, to learn and campaign—with curry served in the most unlikely places!

Following Linda's second visit in 2014, the resource pack was updated for launch at a Connexional event with Dr Daleep Mukarji, former Director of Christian Aid and then Vice-President of the Methodist Conference. Revd Meena Bhati and Ms Priya Masih, two women leaders from CNI, *[pictured above left]* visited here in May 2016, speaking at Connexional events, visiting a number of districts, and attending a concert by Paul Field at Westminster Central Hall, London *[above right]*.

Links were made with the Churches' Dalit Support Group and the Dalit Solidarity Network UK, and the issue shared with the Methodist Church as a whole in a variety of ways, not least through the content of the 2016 Easter Offering service. Our original fund-raising target of £50,000 was exceeded, with over £86,000 raised by 31 August 2016.



SUPPORT FOR REFUGEES

MWiB President Anne Browse visited Germany in 2014 and saw first-hand evidence of the refugee and migrant crisis currently affecting many countries in mainland Europe. Then, in May 2015 Anne was one of a group of twelve women, representing nine Christian denominations, invited by Churches Together in Britain and Ireland to visit refugee camps in Greece. Anne writes:

"We met with paid workers and volunteers who are working tirelessly to bring relief and hope into that situation. We were particularly humbled by the selfless giving of so many of the Greek people, who are themselves living in austere conditions."

Anne continues to share the stories of conversations with Syrian families whose lives have been dramatically overturned by this crisis, as we consider ways of working with our World Church partners in response to this ongoing situation.

World Federation of Methodist and Uniting Church Women



The World Federation of Methodist and Uniting Church Women (WFM&UCW) is a fellowship of officially recognised groups of Methodist, United and Uniting Church Women, whose purpose is "to know Christ and to make him known".

The aim of the organisation is to support and promote the interests of women in all areas of life and to encourage leadership amongst women in the church. Its logo is the Tree of Life—the name also given to its quarterly magazine.

Methodist Women in Britain is one unit of the World Federation, and we are part of the Europe: Britain and Ireland Area.

The Millennium Development Goals: Have We Made A Difference?

Since their inception in 2000, the United Nations Millennium Development Goals (MDGs) have formed the basis of the work of the WFM&UCW. In October 2015, the annual World Federation Day was held at Towcester Road Methodist Church, Northampton, looking at the MDGs and asking the question, *Have we made a difference?*



Keynote speaker Meg Munn, a Methodist and former MP spoke about the UN 2015 report, and the 'huge progress' made towards lifting the world's populations out of extreme poverty. Then there was a speed-dating-style session, with small groups moving around eight stations to learn how organisations including Christian Aid, All We Can, Christians Aware and Traidcraft are addressing one or more of the MDGs.

The UN has now set 17 new Sustainable Development Goals (SDGs) to be reviewed again in 2030, and these will again underpin and inform the work of MWiB and the WFM&UCW for the next five years.

You can find out more information and download resources about the SDGs, or Global Goals as it is hoped they will become known, at www.globalgoals.org



World President 2016-2021
Alison Judd

World Federation Day 2016



Saturday 29 October



World Federation of Methodist & Uniting Church Women

13th World Assembly 2016

Houston, Texas, USA

Every five years the WFM&UCW holds its World Assembly, with women from all over the world gathering together to worship, learn and share fellowship. This year it was held in Houston, Texas and was on the theme “Chosen People, Called to Proclaim” (1 Peter 2:4-5). It was a vibrant and colourful affair with more than 750 women gathering in the Hilton Hotel from every corner of the world. We were led in worship, Bible studies, preaching and presentations, and each Area gave a report on the work it had been engaged in for the past five years. It was wonderful to see the work that had been done on the UN Millennium Development Goals by different areas and to hear about their area seminars.



60 women from the Europe: Britain and Ireland Unit attended the World Assembly in Houston.



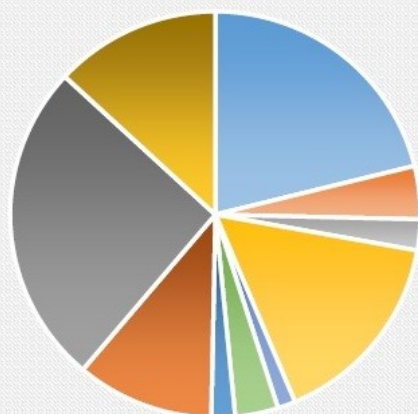
Helen Kim Memorial Scholars— young women aged 18-30 chosen from each Area of the WFM&UCW to take part in a Leadership Development Programme and to represent young women within their Area for the next quinquennium. Rachel is 5th from the right, and Wanda 2nd from the right.

Along with the celebration a lot of business was done in the evenings and a new World Executive of WFM&UCW was voted in—including the new World President, Methodist Women in Britain’s very own Alison Judd, who will now lead WFM&UCW for the next five years. She will travel around the world to meet with women and hear their stories, as well as carrying out many other duties for WFM&UCW and the Methodist Church. We keep Alison and the rest of the World Executive in our prayers over the next five years.

On a more local level we also welcomed our new Area Officers, President Louise Wilson (Ireland) and Vice President Carolyn Lawrence (Britain), who will represent our Area for the next five years, and our new Helen Kim Scholars Wanda Hogan (Ireland) and Rachel Allison (Britain) [see left] who will be encouraging more young women to be involved in the World Federation and working on the UN Sustainable Development Goals that they have chosen to focus on over the next five years.

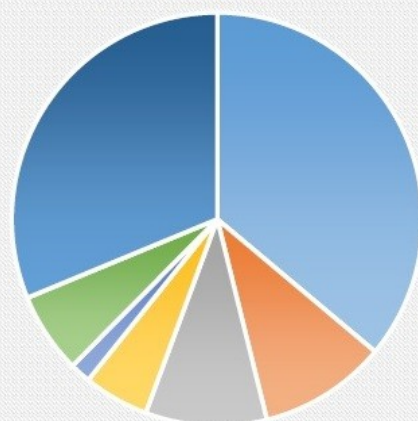
Financial Summary

Payments Y/E 31.08.16



- Office & Committee Expenses
- Empowerment Gifts
- Social & Community Action Grants
- Swanwick Weekend
- Resources
- Pilgrimages
- WF Day & Paul Field Concert
- T4T and Dalit Solidarity
- WF Loan- repaid March 2017
- Other

Income Received Y/E 31.08.16

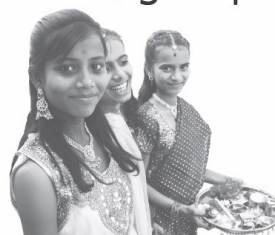


- Donations and Gift Aid
- Legacy
- Interest Earned
- Sale of Resources
- Paul Field Concert & WF Day
- Pilgrimages
- T4T, Dalit Partnership & Other Collections

EASTER OFFERING 2016



"Child, get up!"



EASTER OFFERING 2016

The Easter Offering Service is an annual act of worship prepared by MWiB on behalf of the Methodist Church's World Mission Fund.

The 2016 service was inspired by the words of Jesus in John 10:10: "I came that they may have life, and have it abundantly".

For five years (2011-2016) MWiB has been supporting the work of the Church of North India among Dalit women, those formerly called 'untouchable', and the service contained three stories about empowering Dalit women, educating Dalit girls, and tackling caste-based abuse of young women.

Easter Offering gives the whole of the Methodist Church in Britain and Ireland the opportunity to give to the work of the World Mission Fund and our 65 Partner Churches overseas. The 2016 service raised £437,798.

EASTER OFFERING 2017

Shine like Stars



RESOURCES AVAILABLE NOW

Resources for the 2017 Easter Offering, "Shine Like Stars", are available to download from the MWiB website.

Empowerment Gifts



Each year MWiB donates £10,000 to projects working to empower women overseas. Nomination forms are available on the MWiB website, and projects are selected by the MWiB Forum at its Autumn meeting.

In the financial year 2015-2016, MWiB allocated empowerment gifts of £2,500 each to four projects.

United Mission to Nepal

A 12-month internship programme for young Nepali Christians, designed to develop professional and leadership skills, preparing them for effective mission in their chosen professions.

Magnify

A women's leadership project equipping, encouraging and empowering a generation of women. The project is supported by Stephen and Jane Day, Methodist Mission Partners serving in the Church of South Africa.

Children of Hope

Funding a full-time Specialist Community Nurse to identify and meet the health needs of young, vulnerable children in rural Uganda, and to engage the local communities in health education.

Ayra Indryas

of the Women's Desk in the Lahore Diocese, Pakistan.

To reenable Ayra to run a course in Women's Studies, Peace Building and Conflict Resolution in the Women's College in Lahore.

Social and Community Action Grants



MWiB uses the interest from its Welfare Fund to make grants to local projects around the UK, fostering an active interest and involvement in social and community action. Funding is available for projects which meet a local social or community need, particularly within marginalised groups, and for individuals or groups seeking funding for imaginative new areas of work. In 2015-2016, grants were made to a wide variety of projects.

SAMBELL'S CAFÉ [pictured above] was able to buy new crockery for their busy café. Using local, ethically-produced and/or Fairtrade products wherever possible, staff and volunteers aim to serve up inexpensive, tasty, and healthy food to their customers.



PUPPET MINISTRY: youngsters who attended an after school club asked if they could stay on and do something more challenging – and this is the result! The puppets enhance worship and are bringing people into church.

LUNCHEON OUTREACH CLUB provides fellowship and outreach to the local community, offering social interaction and sustenance.



SECOND HELPINGS collects surplus food from shops, farms and restaurants, which is cooked by volunteers to provide Saturday lunch on a pay-what-you-can-afford basis. The aim is to help vulnerable and needy people, and combat food waste.

DEMENTIA CARE: Grants were made to two groups, one of which is a joint project between the local church and the nearby medical practice, which provides an innovative and holistic community-based way of supporting people with dementia and their families.

COMMUNITY WOMEN'S GROUP works with other local agencies to provide a safe environment for local women to be empowered with confidence building, new skills and money management. The work is aimed at women with low self-esteem, mental health problems, poor education, and low income, some of whom are also single parents. The women are encouraged to be involved with running the group and sharing their skills.

BABY AND PARENT/CARER GROUP provides a place where parents, grandparents and carers can meet, talk, and take refreshments whilst providing a safe place for children to play, learn and be creative.

NEW PARKS NEW FRIENDS is a partnership between churches and local residents. The project aims to revive community spirit by enabling local people to meet together in friendship, and matching volunteer visitors with the isolated, lonely and housebound.

COMMUNITY SPACE (1)

provides a much-needed caring, welcoming space for groups in the local community including new work with a dementia group and the elderly.

COMMUNITY SPACE (2)

provides meeting space for several Alcoholics Anonymous groups, a Narcotics Anonymous group, Prince's Trust courses for unemployed school leavers and runs a drop-in centre.

THE LITTLE SPACE provides a crèche for users of Foodbank, Job Club, debt advice service, parenting and cookery classes, etc.



THE GROWING PLOT

is a gardening project that works with young people with challenging behaviours, helping them to turn their lives around and become contributors to society. It also aims to connect them to their local church. The grant funded the purchase of gardening tools and storage.

COOKERY CLUB teaches basic cookery skills, economical meal making, use of simple nourishing ingredients, social skills, and teamwork. This arose from Foodbank staff noticing that some clients had limited ability to use the food given. The Club is open to users of the Foodbank, debt counselling sessions and homeless accommodation.

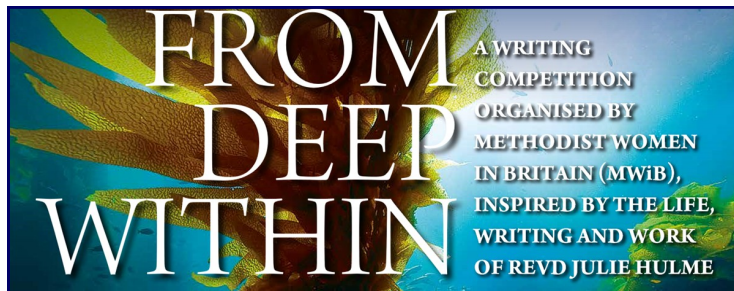


Reviving community spirit by enabling local people to meet together in friendship



The total amount available for Social and Community Action grants in 2015-2016 was approximately £7000.

Grant criteria and application forms are available to download from the MWiB website. Closing date for applications is the end of February.



In 2016 MWiB launched a new writing competition inspired by the life, writing and work of Revd Julie Hulme. The theme was *From Deep Within*, and over 180 entries were received. These were narrowed down to a shortlist, and winners were announced at the MWiB Fringe Event at the Methodist Conference in June 2016.

The overall winner was Sue Whalley from the Nidd Valley Circuit in the Leeds District. Commenting on her meditation *How Beautiful*, the judges said it “reflects the social concerns of Methodist Women in Britain and the World Federation of Methodist and Uniting Church Women” and is “thought worthy of Isaiah!”

The runner up and highly commended entries can be read on the MWiB website.



Revd Julie Hulme

Julie was a Methodist minister and a prolific writer. She was the last President of Women's Network in 2010-2011, becoming the first Vice-President of MWiB in 2011-2012. She died of cancer in 2014, leaving behind a rich legacy in the form of her writings, which can be accessed on the website: www.imaginingabundance.co.uk

How Beautiful

Isaiah 52 v 7a

‘How beautiful on the mountains are the feet of those who bring good news, who proclaim peace.’

How beautiful are the feet which pick their way through broken glass, blood and carnage to bring comfort to those dying, to save the lives of those bleeding, to be alongside the terrified in the bars of Paris.

How beautiful are the feet which trudge through mountain passes, landslides and rocks to bring food, water and medical supplies to those cut off for days, in remote villages in the high Himalayan passes.

How beautiful are the feet which pound city streets in the early hours of the morning, offering hot drinks, flip flops and taxis to those who are vulnerable and have put their lives at risk.

How beautiful are the feet which repeat the same route day in and day out, visiting the houses of those who have no one, locked in homes that no longer ring with voices and where hardly anyone comes.

How beautiful are the feet which go the extra mile, carrying the extra load, often blistered, weary, dusty yet fixed and unerring, following the road that leads to you, our Prince of Peace.

How beautiful are the feet which were pierced by nails, feet which trod this earth of ours, opening paths of inclusion, tolerance and forgiveness. Feet which trod the dusty, jeering road to Calvary, for our sake – from deep within – to show us the road to love and peace.

© Sue Whalley, 2016

Events Diary: 2016—2017

2016

Friday 23 September	MWiB Executive meets at MCH, London
Sat 15—16 October	MWiB Forum meets at The Hayes, Swanwick
Saturday 29th October	<i>A Taste of Texas: World Federation Day 2016</i> Rowbarton Methodist Church, Taunton
Fri 4—Sun 6 November	MWiB Executive Retreat, Mill House, Devon
Wednesday 23 November	MWiB Executive meets at the Highbury Centre, London

2017

January	Launch of 2017 writing competition— <i>Stepping Out</i>
Wednesday 11 January	MWiB Executive meets at MCH, London
Sat 17—Sun 18 February	MWiB Forum meets at Hinsley Hall, Leeds
March—October	Transforming the World from the Kitchen?—Heritage and Archives Exhibition reopens at Epworth Old Rectory
Friday 3 March	Women's World Day of Prayer
Wednesday 22 March	MWiB Executive meets at MCH, London
Friday 31 March— Saturday 2 April	<i>Willkommen, Bienvenue, Welcome</i> —Residential with keynote speaker Bishop Rosemarie Wenner. The Hayes Conference Centre, Swanwick, Derbyshire
Wednesday 19 April	Closing date for writing competition entries
Saturday 20 May	<i>Leaving the Familiar</i> —Creativity Day, Liverpool
Tuesday 13 June	MWiB Executive meets at MCH, London
Friday 23 June	MWiB Fringe event at Methodist Conference including announcement of writing competitions winners and induction of Sandra Goodwin as MWiB President
Saturday 8 July	Training event for new Forum reps, MCH, London
Tuesday 5 September	MWiB Executive meets at MCH, London
Sat 30 Sep—Sun 1 October	MWiB Forum meets at The Hayes, Swanwick
Saturday 28th October	<i>Mind the Gap: Gender Equality in the 21st Century</i> World Federation Day at Side Door Church, Grimsby



TRANSFORMING the World from the kitchen?



Come and see the exhibition from
19 March to 29 October 2016 at Epworth Old Rectory

For more information about Methodist Heritage
visit www.methodistheritage.org.uk Methodist Heritage





www.mwib.org.uk



Methodist Women in Britain



@methodistwomen

Contact us: **Methodist Women in Britain**
P.O. Box 9298
Loughborough
LE11 9FY

Telephone: **0300 030 9873**

Email: **admin@mwib.org.uk**